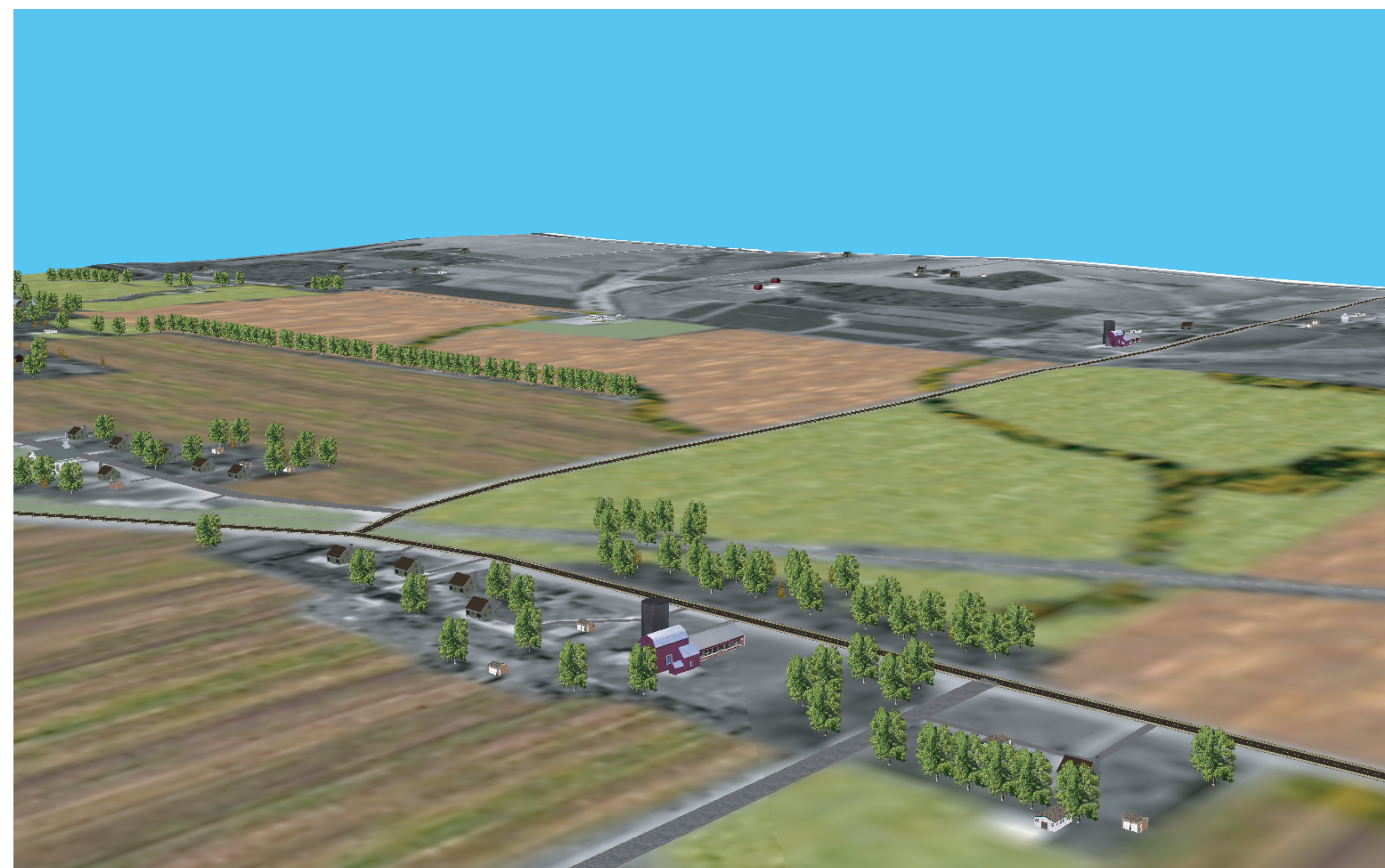


# Existing Conditions in Eureka Township

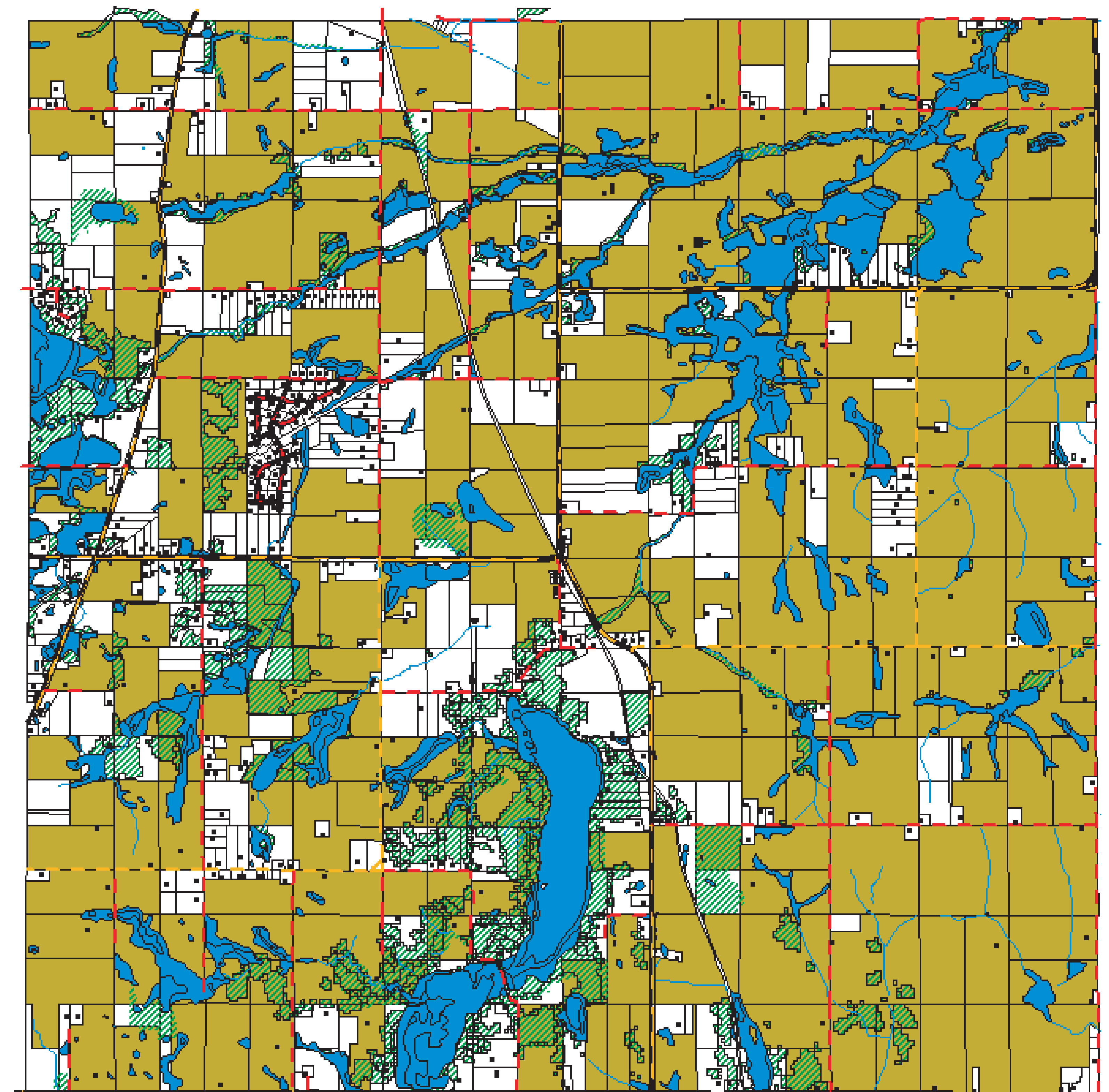
What is the current development pattern in Eureka Township?

This poster shows existing development in Eureka Township as a baseline for comparison with the six growth scenarios presented at Station Three. The current character of Eureka is undeniably rural and agricultural, with roughly 15,685 acres (68%) of land in the Township enrolled in the tax-deferred farmland protection programs Agricultural Preserves or Green Acres.

According to the 2000 Census, Eureka Township had 1,490 residents, 496 households, and an estimated 449 school-aged children.



*Intersection of 250th Street and Cedar Avenue (looking west)*



*Existing Conditions in Eureka Township*