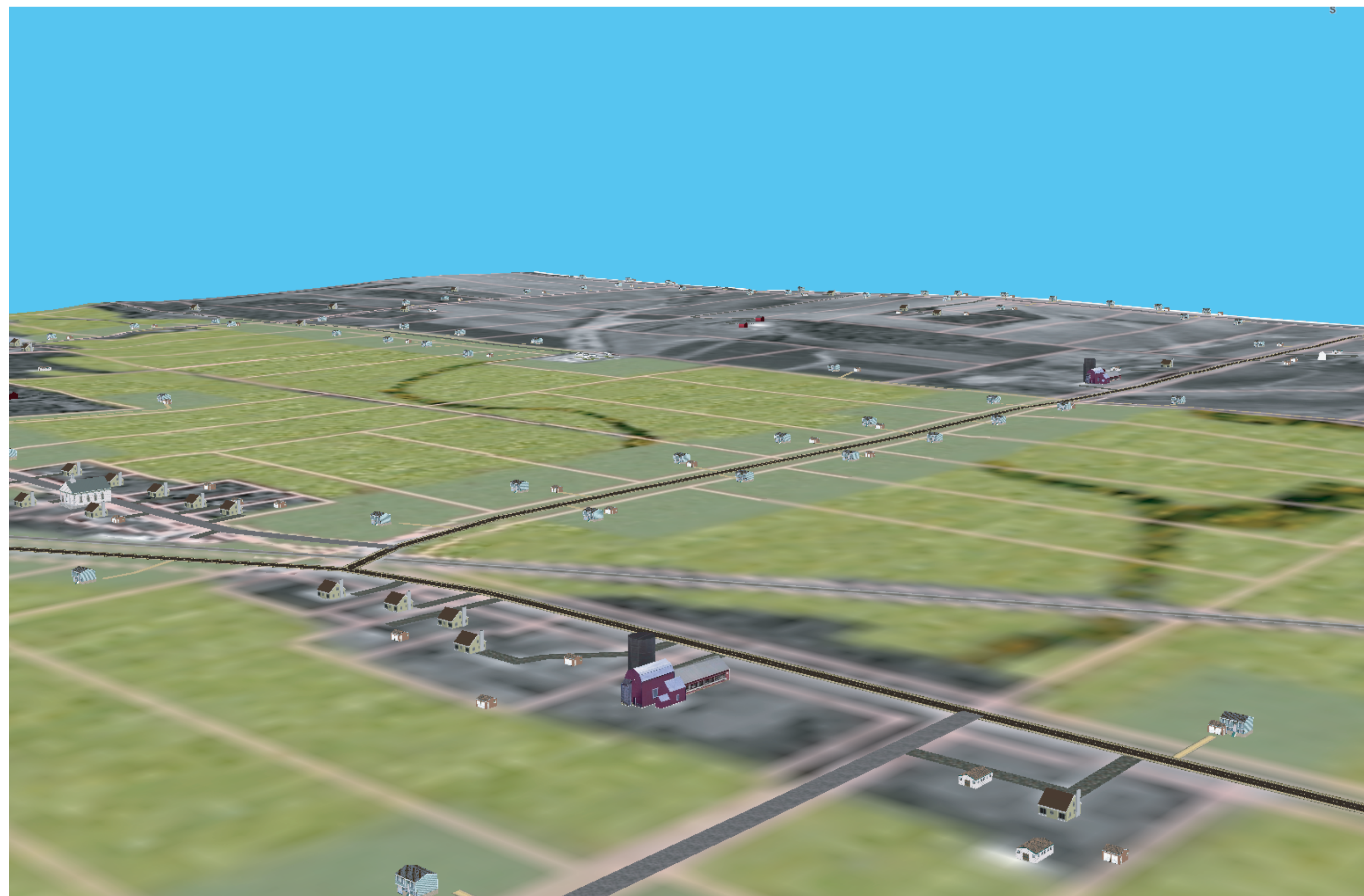


# Scenario: 10-Acre Buildout

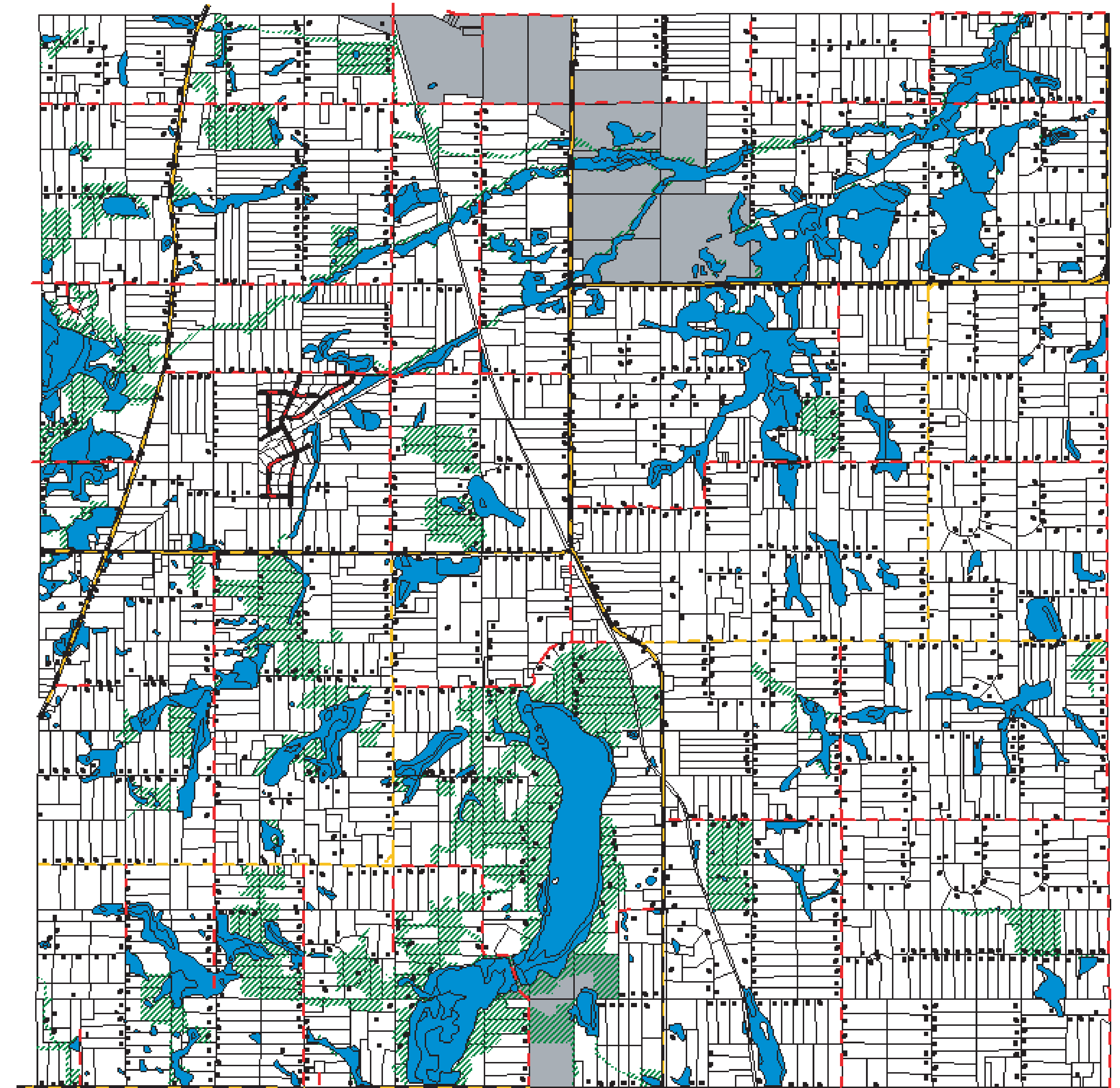
What if the current zoning is changed to allow all parcels of 10 acres or more to have residential development?

This scenario shows what Eureka might look like if it were to develop at a minimum residential zoning density of 10 acres, similar to many areas of Scott County. The scenario assumes that all 10-acre parcels are developed (built out).

As shown here, the 10-Acre Buildout Scenario would result in an additional 1,527 homes, 4,581 residents, and approximately 1,382 school children.



*Intersection of 250th Street and Cedar Avenue (looking west)*



*Eureka Township with Full Buildout at 10-Acre Zoning*

*Note: This scenario is a hypothetical growth scenario only; it is not intended as a recommendation or plan for future development in Eureka.*