

Community Background & Vision

Facts About Eureka Township

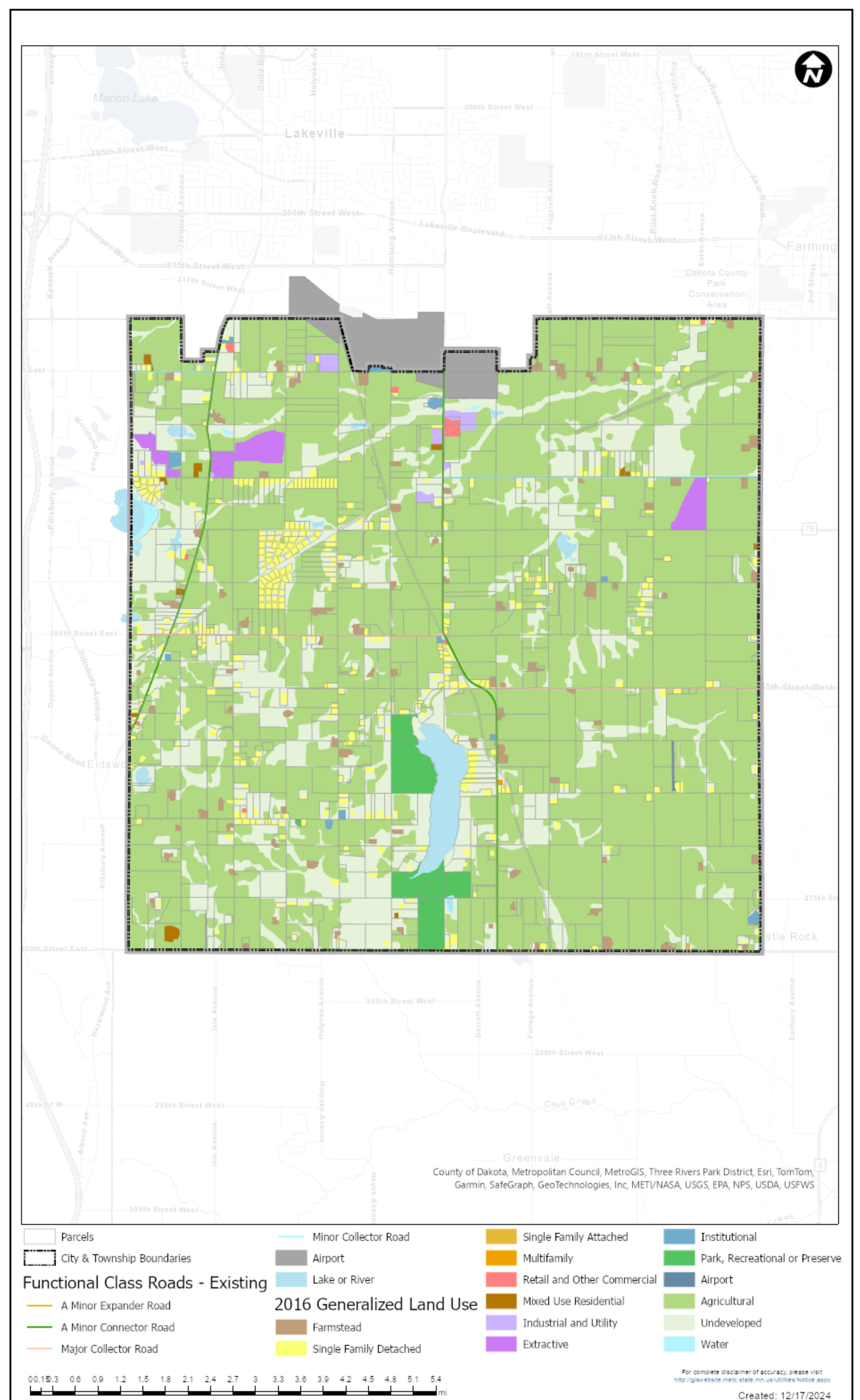
- 35.2 square miles (22,527 Acres)
- 356 Acres of Parks, Recreation & Preserves
- 2023 Population – 1,388
- Households – 526
- Median Household Income – \$104,100 (2018-2022 ACS)
- Development density in Eureka Township is 1 residential unit per 40 acres.



In 2018, the Town Board laid out a vision for the town's future. This vision was reflected in the policies of the Comprehensive Plan – to guide the Town through short-term and long-term planning. This Vision Statement encapsulates the hopes and character of *what Eureka Township is, and what Eureka Township will be.*

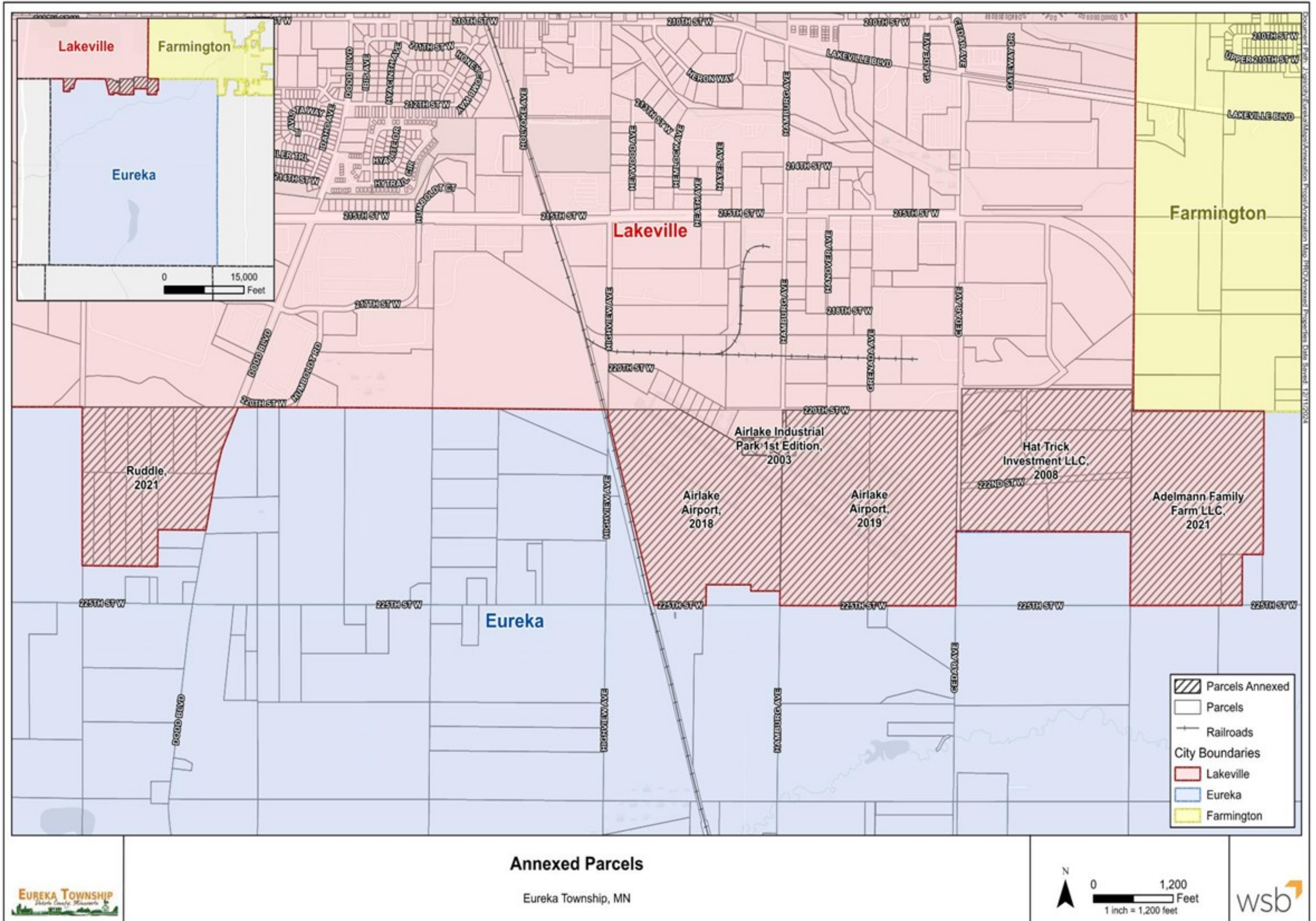
Eureka Township Comprehensive Plan 2040 Vision –

“In the year 2040, Eureka Township will be a rural and agricultural environment characterized by farms, private and public open space, very low density non-farm housing with private utilities, and a small number of businesses including home occupations and agricultural-related enterprises. Residents will continue to enjoy a high quality of life due to the Township's natural beauty and tranquility.”



Challenges Facing the Town

Since 2003, the City of Lakeville annexed 590.46 acres of land from the Town. These parcels include the airport and some industrial uses while others are still vacant land. The annexations reduce the Town's tax base.

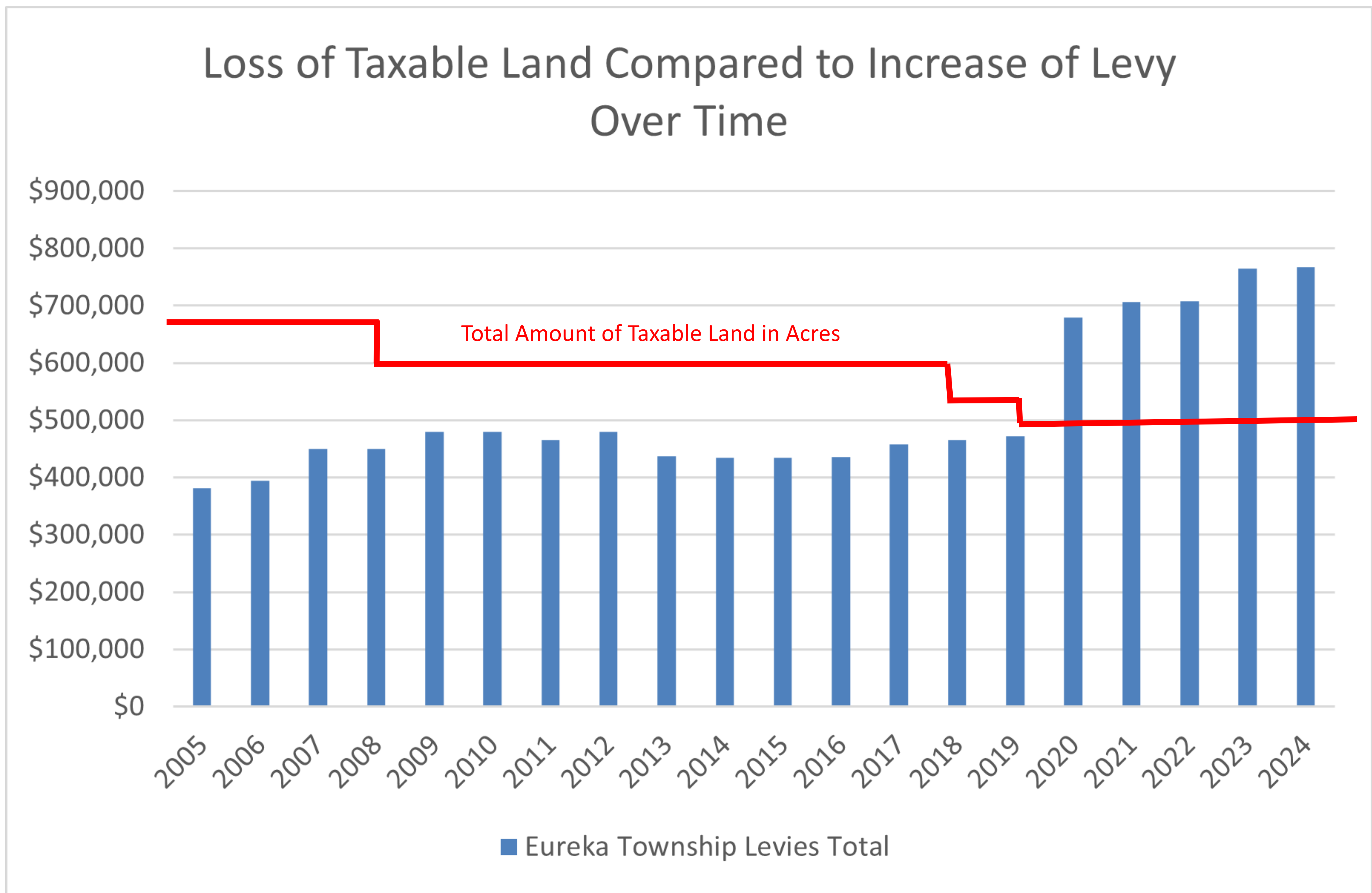


Economic Impacts

With annexation, the Town's budget revenue is decreased at a time where service cost are increasing. This creates an environment where the Town's budget continues to increase annually but the revenue is decreasing.

	Airlake Industrial Park 1 st Expansion (2003)	Hat Trick Investment LLC (2008)	Airlake Airport (2018)	Airlake Airport (2019)	Ruddle Expansion (2021)	Adelmann Family Farm LLC (2021)	Total Estimated Property Tax Revenue
Estimated Property Tax in 2024	Exempt	\$6,906.68	Exempt	Exempt	\$3,491.50	\$3,306.00	\$14,004.18

*These numbers do not include Dakota County School District Taxes and do not include tax payments from the Metropolitan Airport Commission properties.





Challenges to the Town's Future

- Decreasing the total amount of taxable property in the Town
- Shrinking the tax base
- Town budgets increase – More expensive services
- Costs spread out among fewer parties
- Residents will pay higher taxes

Solutions to Consider

We need your input...

What do you think that the Township should do?

- Preserve autonomy?
- Increase tax base?
- What suggestions do you have for the Town Board?

